



Weybridge

Price £1,195,000 (Freehold)

A stylish development of just two stunning 4 bedroom townhouses of 2248 sq ft, ideally situated in the heart of Weybridge with its boutique collection of shops, cafe's and restaurants EPC Rating B.

One of JUST two brand new, four bedroom semi detached homes located in the heart of Weybridge. Boasting high specification fittings and finishes, the property offers well proportioned and extremely spacious accommodation throughout.

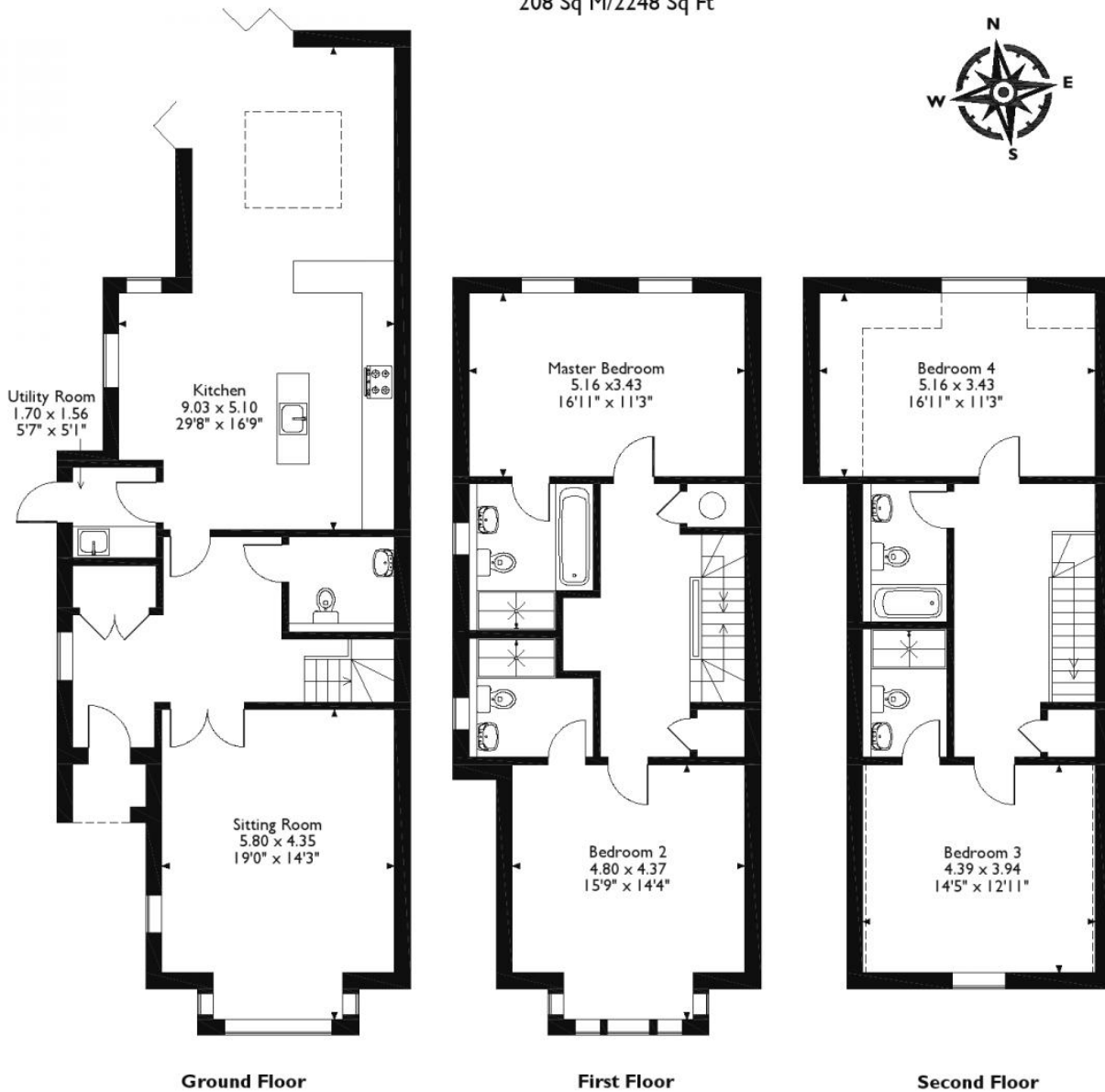
Oak flooring runs through the large entrance hall and into the bay fronted living room and kitchen family room. The large kitchen family room has a full range of integrated appliance and a separate utility room. Bi folding doors lead out to the secluded rear garden. On the first floor you will find the master bedroom with en-suite, bedroom two and the family bathroom. The second floor has two further double bedrooms along with a further en- suite and second family bathroom.

Externally to the front there is off street parking along with storage. Whilst to the rear a good size garden with a large patio terrace.

- Built to a high specification throughout
- Four double bedrooms
- Town centre location and close to mainline station
- Off Street parking

Floorplan

Approximate Gross Internal Area
208 Sq M/2248 Sq Ft



Please note that the location of doors, windows and other items are approximate and this floorplan is to be used for illustrative purposes only. Unauthorized reproduction is prohibited.

Directions



IMPORTANT NOTICE TO PURCHASERS: We endeavour to make our sales particulars accurate and reliable, however, they do not constitute or form part of an offer or any contract and none is to be relied upon as statements of representation or fact. The services, systems and appliances listed in this specification have not been tested by us and no guarantees as to their operating ability or efficiency are given. All measurements have been taken as guide to prospective buyers only, and are not precise. If you require clarification or further information on any points, please contact us, especially if you are travelling some distance to view.