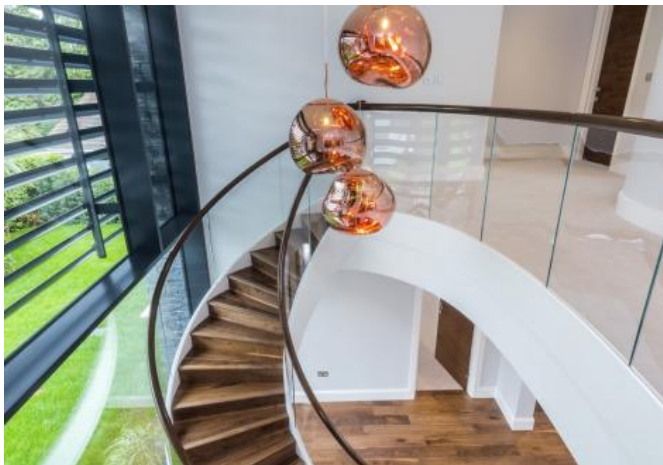
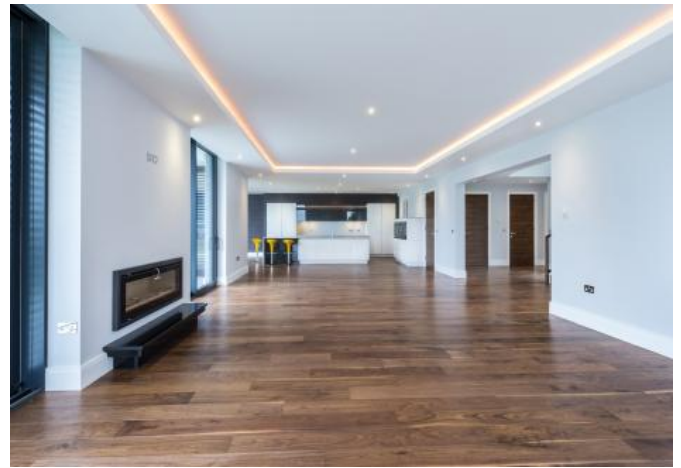
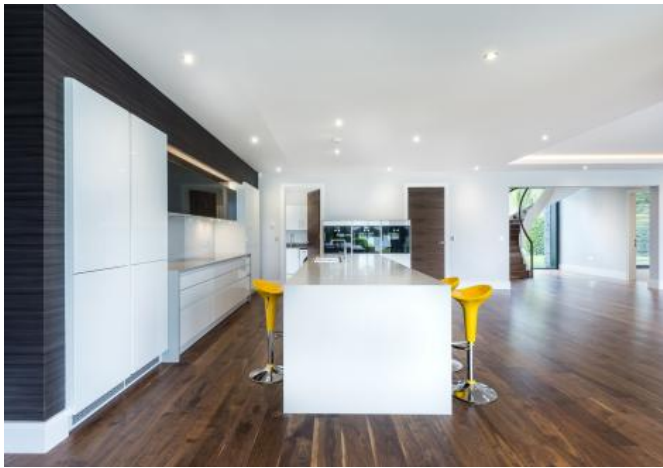




Chichester

Guide Price £3,250,000 (Freehold)

A striking and unique house of contemporary design, with direct harbour frontage and access to Chichester Harbour. The panoramic views from the house over the harbour to the South Downs beyond are uninterrupted and unsurpassed.



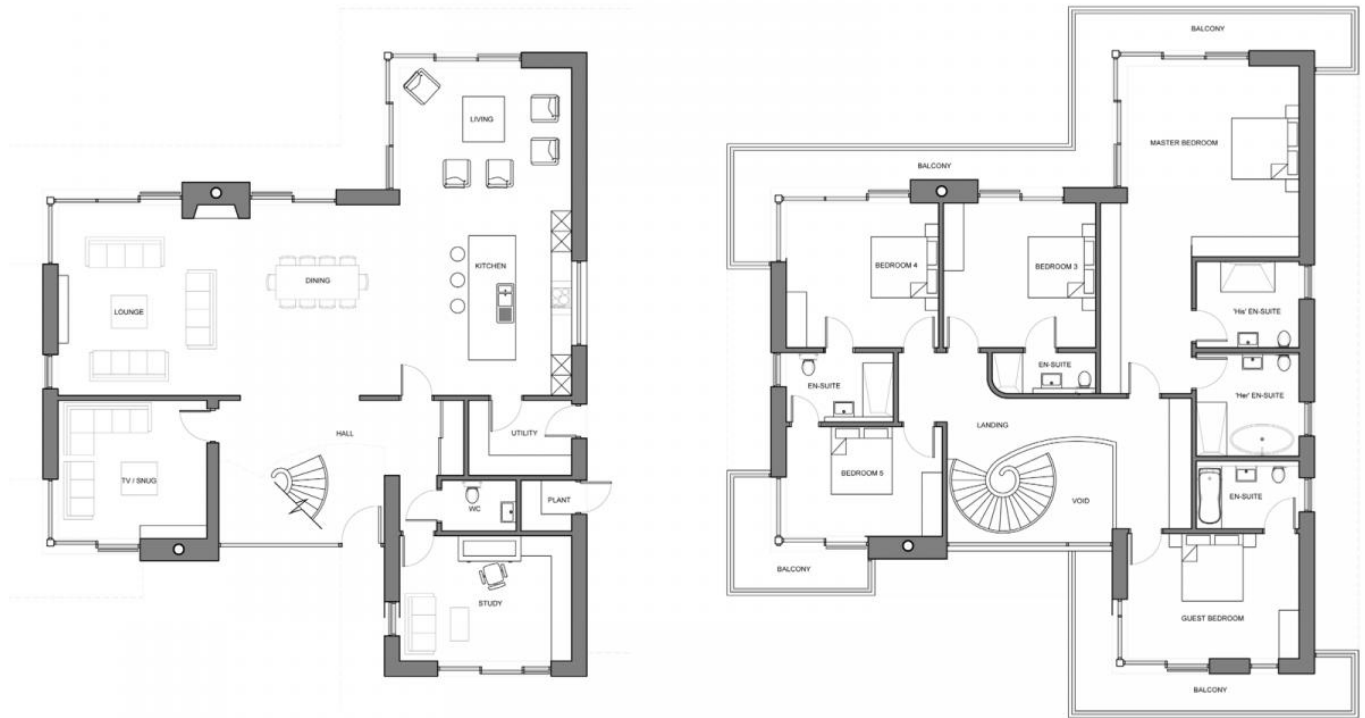
Brightwater is a new contemporary riverside house with direct harbour frontage and access to the Æltchenor Reach Æ of Chichester Harbour.

The views from the property over the harbour to the South Downs beyond are possibly unsurpassed and truly outstanding. Brightwater is quite unique and has been built with passion, enthusiasm and meticulous attention to detail, using traditional methods of construction combined with cutting-edge technology, materials and fittings.

Designed by Des Ewing, the much acclaimed award winning architect, the principle living spaces on the ground floor are open-plan, taking full advantage of the sun, light and views. Break points have been designed where walls can be introduced to create further separate living rooms if desired.

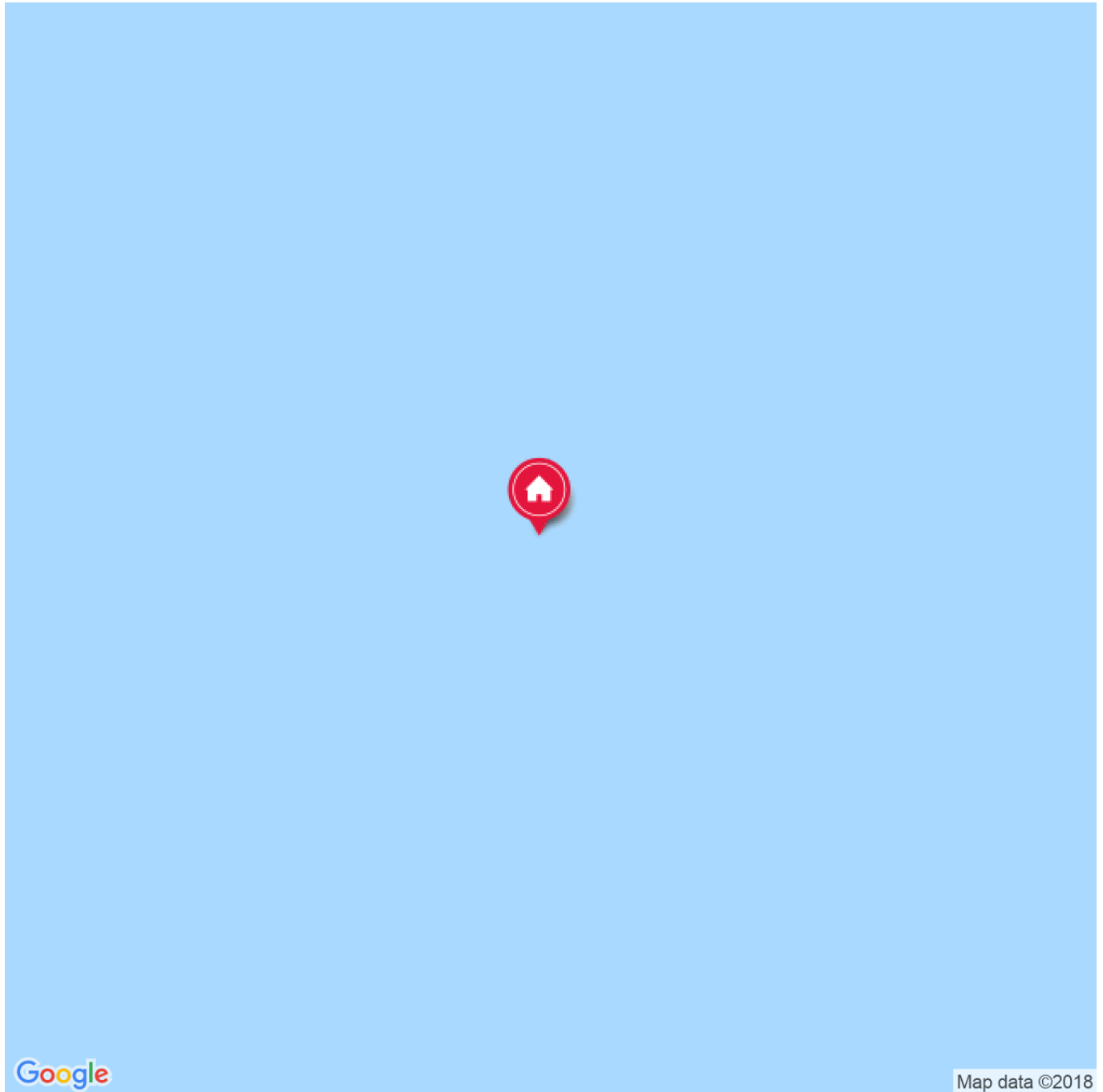
Perhaps the most striking aspect of this contemporary masterpiece is the sight of the helical staircase and vaulted hallway, as seen through the vast south-facing curtain wall of glass upon arrival, past which the open-plan living space reveals the harbour beyond. This arrival sets the scene for an endless display of quality and design throughout.

Floorplan



Directions

Chichester Harbour is an Area of Outstanding Natural Beauty (ANOB), adjoining the Solent, located less than 2 hours drive from central London and south of the Roman city of Chichester and Goodwood Race Course, the renowned motor racing circuit and festival theatre. The harbour has moorings, marinas and numerous yacht clubs providing exceptional leisure facilities for keen sailing and boating enthusiasts. The Blue Flag sandy beaches of West Wittering are at the mouth of the harbour, a mere 4 miles away by road for those not wishing to use the water.



IMPORTANT NOTICE TO PURCHASERS: We endeavour to make our sales particulars accurate and reliable, however, they do not constitute or form part of an offer or any contract and

none is to be relied upon as statements of representation or fact. The services, systems and appliances listed in this specification have not been tested by us and no guarantees as to their operating ability or efficiency are given. All measurements have been taken as guide to prospective buyers only, and are not precise. If you require clarification or further information on any points, please contact us, especially if you are travelling some distance to view.