



Weybridge

Price £395,000 (Leasehold)

What a truly spectacular view this apartments has. Offering a ranging vista over the communal grounds, extending beyond the Broadwater Lake and adjacent fields. EPC Rating D



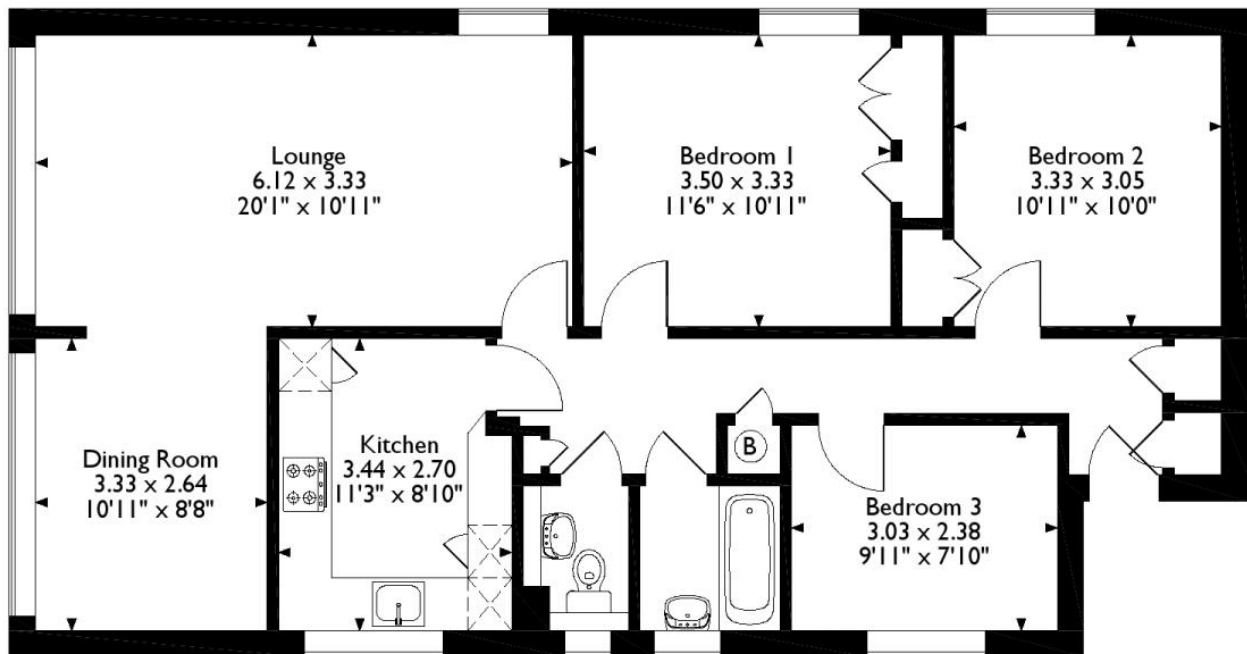
Being far larger than the majority of other apartments in Beechcroft Manor, this three bedroom, top floor home measures approximately 952 sq ft. On entering the flat the hallway forms the central spine to the property, giving an excellent flow to the layout of the accommodation. The three bedrooms are all of a good size, with the two largest having built in cupboards. The bathroom has an adjoining WC and bathroom, both are fully tiled with a white suite. There is a beautiful modern kitchen with high gloss white unit fronts and black worktops. The kitchen is bright and spacious with space for a small table for breakfast/dining. At the rear of the property are the principle reception rooms, dual aspect lounge with a dining room to the side, forming a large "L" shaped room with ceiling to floor double glazed windows, giving panoramic views over the lake. If a bright attractive apartment with views, to die for is what you are after, look no further.

Lease Length 93 years, Ground Rent £50 pa, Service Charge £829.49 every 6 months

- Larger Than Most
- Spectacular Views
- Three Bedrooms
- 952 Sq Ft
- Must Be Viewed

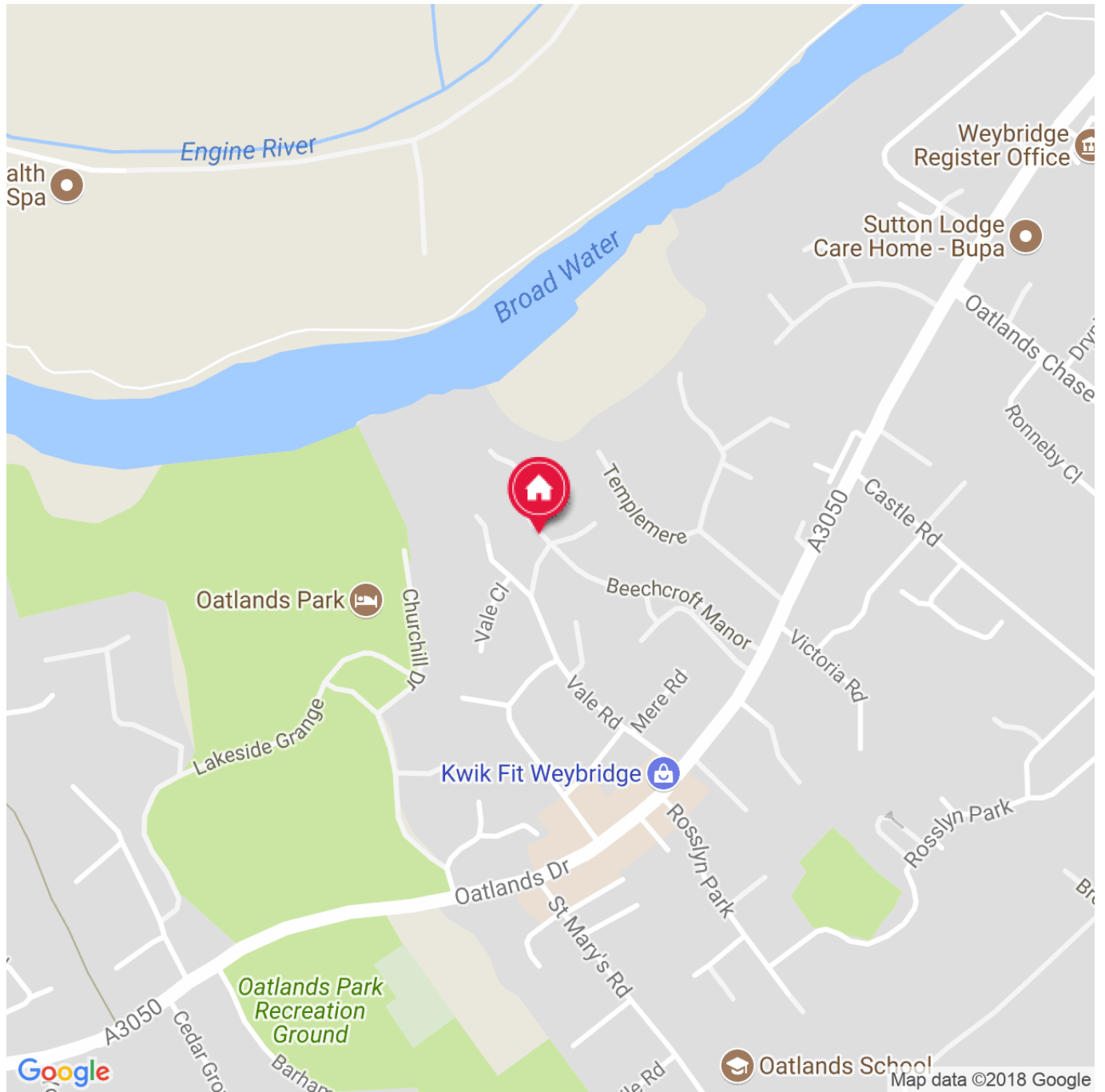
Floorplan

Approximate Gross Internal Area
88 Sq M/952 Sq Ft



Please note that the location of doors, windows and other items are approximate and this floorplan is to be used for illustrative purposes only. Unauthorized reproduction is prohibited.

Directions



IMPORTANT NOTICE TO PURCHASERS: We endeavour to make our sales particulars accurate and reliable, however, they do not constitute or form part of an offer or any contract and none is to be relied upon as statements of representation or fact. The services, systems and appliances listed in this specification have not been tested by us and no guarantees as to their operating ability or efficiency are given. All measurements have been taken as guide to prospective buyers only, and are not precise. If you require clarification or further information on any points, please contact us, especially if you are travelling some distance to view.