



## Weybridge

Price £449,950 (Freehold)

Tucked away in a quiet road close to the Monument Hill end of the High Street, this two bedroom semi detached house is ideal for someone looking to put their own stamp on a home. EPC Rating D



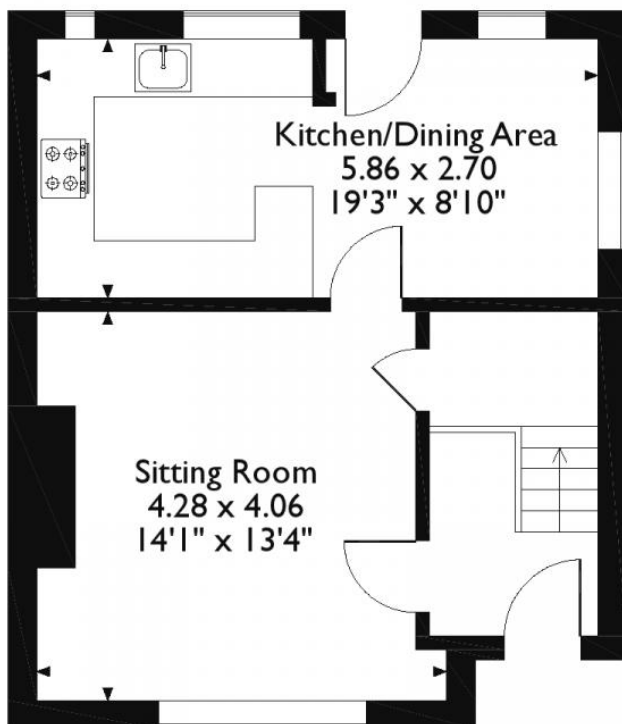
The house has off street parking in front, on a gravel drive, for two cars. On entering the property there is a small hall with a door to the lounge and staircase to the first floor. The lounge is at the front and has a chimney breast allowing for a feature fireplace to be added. The lounge leads onto the kitchen/dining-room across the rear of the house with door to the garden. The kitchen has a good amount of units and storage along with space for an eating table. The first floor comprises two double bedrooms with a family bathroom. The rear garden is mainly laid to lawn with an initially patio area behind the house and can also be accessed via an arched side entrance through one of the garden walls of Henry VIII former Palace.

Offered with no chain, this house will make a great home for anyone lucky enough to purchase it.

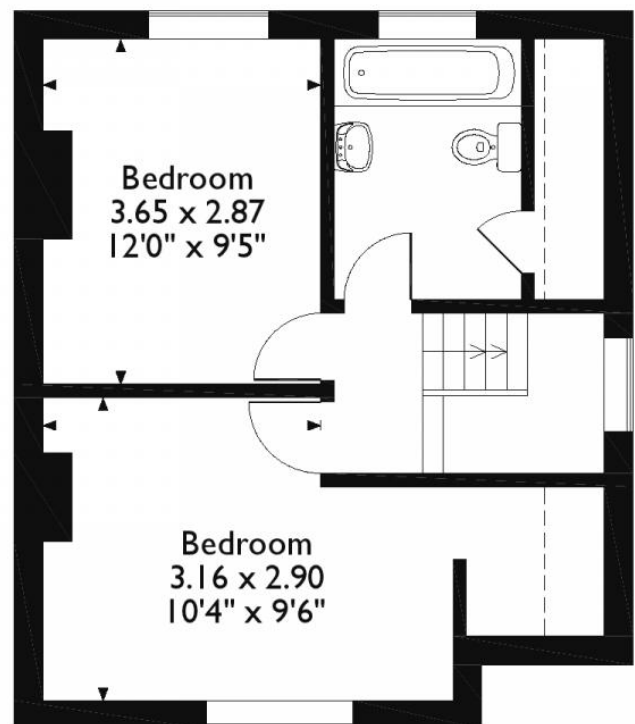


# Floorplan

Approximate Gross Internal Area  
76 Sq M/817 Sq Ft



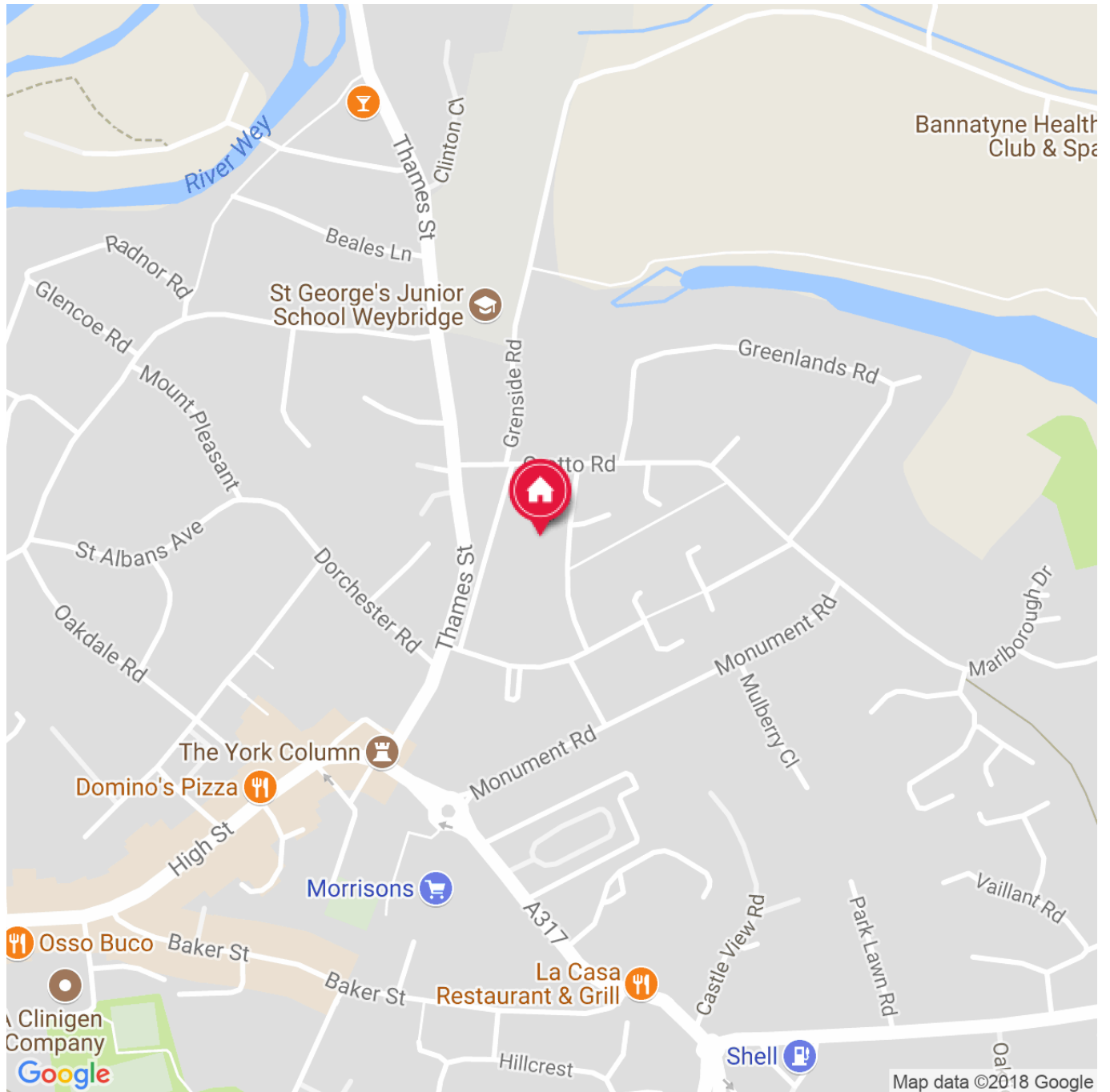
**Ground Floor**



**First Floor**

Please note that the location of doors, windows and other items are approximate and this floorplan is to be used for illustrative purposes only. Unauthorized reproduction is prohibited.

## Directions



IMPORTANT NOTICE TO PURCHASERS: We endeavour to make our sales particulars accurate and reliable, however, they do not constitute or form part of an offer or any contract and none is to be relied upon as statements of representation or fact. The services, systems and appliances listed in this specification have not been tested by us and no guarantees as to their operating ability or efficiency are given. All measurements have been taken as guide to prospective buyers only, and are not precise. If you require clarification or further information on any points, please contact us, especially if you are travelling some distance to view.